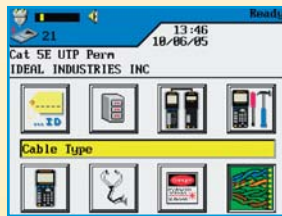
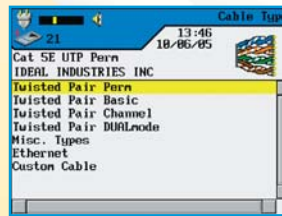


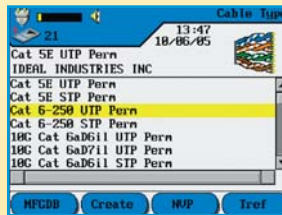
Section 4: Cable Type Setup



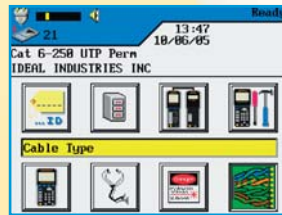
27. Press Shift & F4 or highlight Cable Type icon and press Enter.



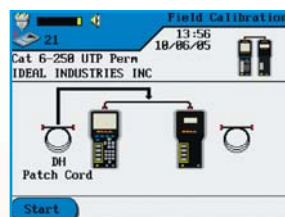
28. Highlight Twisted Pair Perm, press Enter.



29. Highlight desired Cable Test Standard, press Enter.



30. Display will revert to Ready screen, Cable Type updated.



33. Disconnect Remote Patchcord, connect Display Patchcord between units, press F1.



34. Disconnect Display Patchcord from Remote Handset, Connect Remote Patchcord to Remote Handset, press F1 on Display Handset, press **Autotest on Remote Handset**.



35. Calibration Complete, press Escape.



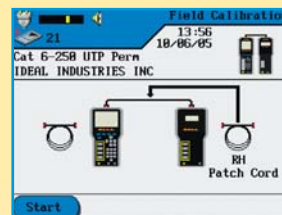
36. Tester is now setup for CAT 6 Test Standard, to be saved in Compact Flash on Slot 1, the current job selected is IDEAL INDUSTRIES INC, Cable ID starts at "TEST 0001".

For more calibration procedures, visit www.idealindustries.com

Section 5: FIELD CALIBRATION



31. Press F3 or highlight the Field Calibration icon, press Enter.



32. Connect Remote Patchcord between the two units, press F1.

Pass/Fail Reporting

You are now ready to perform an AUTOTEST on the cable you have setup.

Power-Up

Individual Autotest Results

✓ Overall test result is a pass. ✓ All values pass with sufficient margin.

✗ Overall test result is a fail. ✗ One or more values fail.

± or ✗ - Pass or fail by a small margin.

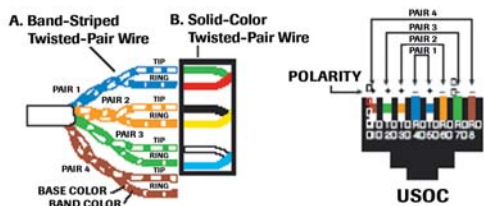
Cable & Network Standard Reference Table

Supported Network Application	Cabling Standards	Operation Frequency	Wire Used	Cabling Bandwidth
10BaseT	CAT3*	10 MHz Rx on pair 3,6	Tx on pair 1, 2 Rx on pair 3,6	16MHz
100Base-Tx	CAT5*	80 MHz Rx on pair 3,6	Tx on pair 1,2 Rx on pair 3,6	100MHz
1000Base-T**	CAT 5*/5E	80 MHz (half duplex)	Tx & Rx on all 4-pairs	100 MHz
1000Base-TX	CAT 5E/6E	250 MHz (full duplex)	Tx & Rx on all 4-pairs	250 MHz
10GBase-T	CAT6A (draft)	500 MHz	Tx & Rx on all 4-pairs	500 MHz

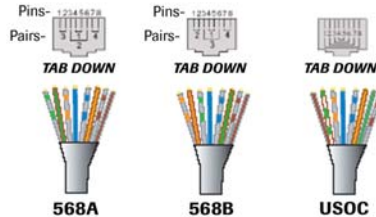
* The information for CAT3 & CAT5 is for reference only. They are both considered to be obsolete.

** To operate on Category 5/5e cable, 1000Base-T systems use complex and expensive noise cancellation circuitry and cost more money than 1000Base-Tx systems which require Category 6 cable.

Wiring Configuration Figure 1

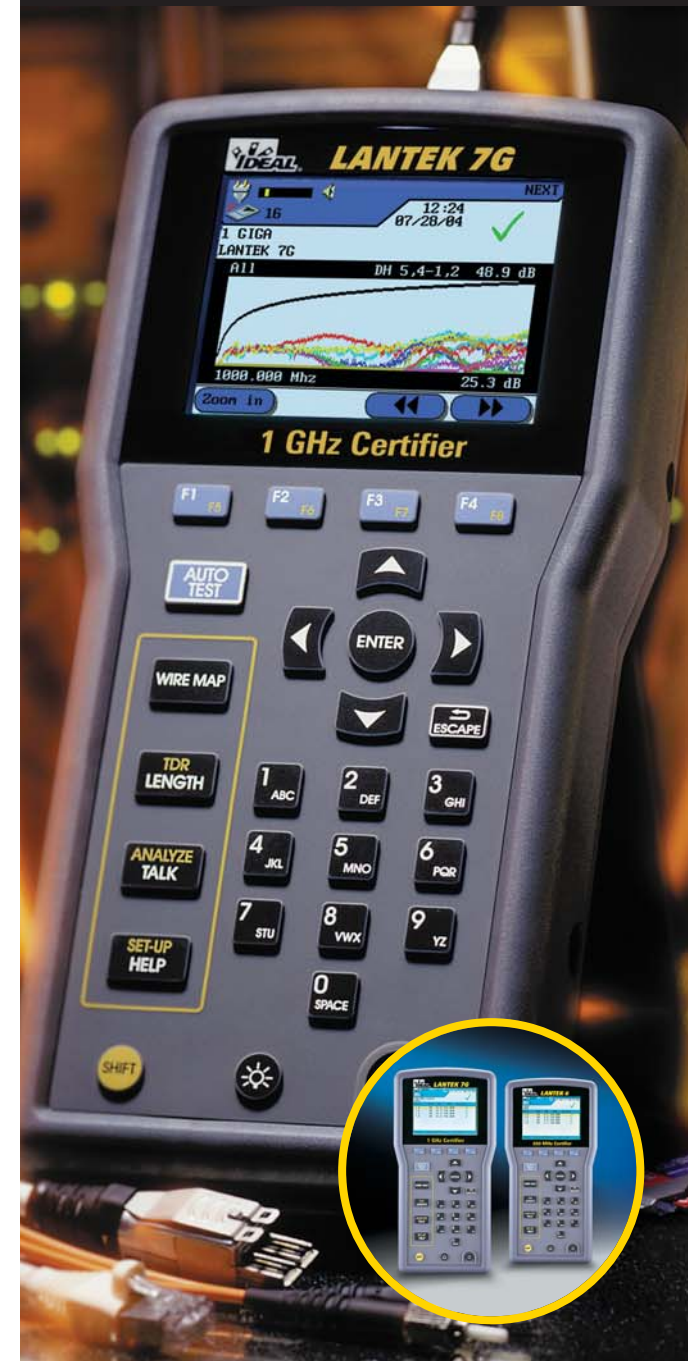


Wiring Configuration Figure 2



IDEAL®

LANTEK® LAN Cable Testers Quick Reference Guide



LANTEK® LAN Cable Testers Quick Reference Guide

For more calibration procedures, visit www.idealindustries.com

IDEAL INDUSTRIES, INC.

Becker Place, Sycamore, IL 60178, USA / 815-895-5181 • 800-435-0705 in USA

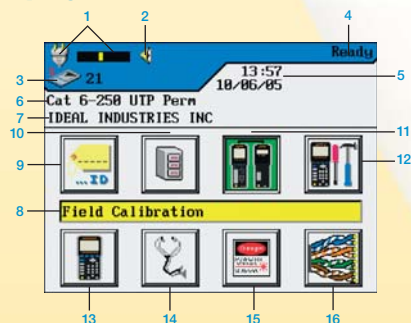
International offices:
Australia • Brazil • Canada • China • Germany • India • Mexico • UK

For complete sales office contact information, visit us at:
www.idealindustries.com

Power-Up

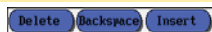
Press the On/Off key to turn on the DH.

LCD Display



- | | |
|----------------------------|--------------------------------|
| 1 Battery | 9 Cable ID Icon |
| 2 Talk Set Indicator | 10 Stored Test Icon |
| 3 Storage Device Indicator | 11 Field Calibration Icon |
| 4 Screen Title | 12 Preferences Icon |
| 5 Time and Date | 13 Instrument Information Icon |
| 6 Cable Setting | 14 Analyze Icon |
| 7 Active Job Title | 15 Fiber Optics Icon |
| 8 Function Title | 16 Cable Type Icon |

Soft Keys



Function Keys



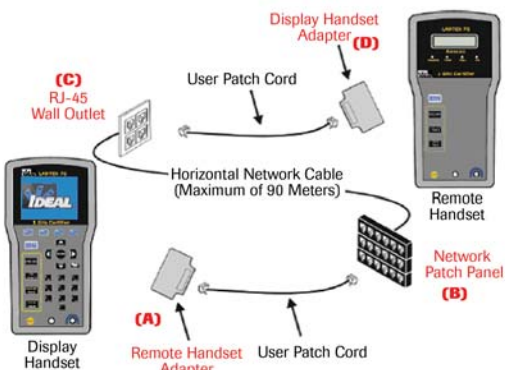
Four function keys positioned directly below the display allow the user to select a soft key action on the Color Display

Overview of Link Testing and Requirements

The following section describes a typical setup for permanent link testing for twisted copper cables only. For specific requirements for channel, fiber, coax and other special cable testing, please refer to the user manual.

A permanent link consists of up to 90 meters of horizontal network cabling. The permanent link (shown above, from B to C) is used to certify the horizontal network cable installation before network connection and user hookup take place. The Permanent Link Test excludes adapters, patchcords and jumpers.

Permanent Link Testing Configuration



LANTEK Setup Procedure

The following procedure will show you step-by-step how to setup test Preferences, specify Cable Type to test, setup Cable ID, Job Naming and Selection. After completing the LANTEK Field Calibration procedure, you are all set to starting testing CAT 6 using single button AUTOTEST on the Display or Remote Handsets.

- Section 1: Preference Setup
- Section 2: Cable ID Setup
- Section 3: Job Naming & Selection
- Section 4: Cable Type Setup
- Section 5: Field Calibration

Section 1: PREFERENCES Setup



1. Highlight Preferences icon, press Enter.



2. Highlight User Information and press Enter.



3. Enter appropriate information, it will be reflected in the tests reports, press Enter upon completion.



4. Press down arrow to highlight Autotest Prof, press Enter.



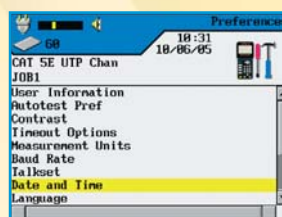
5. Make changes as required, press Enter.



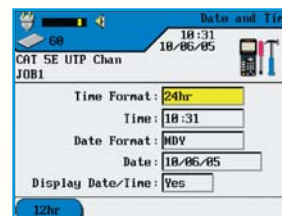
6. Highlight Measurement Units, press Enter.



7. Press F1 to change to "m", or press Enter.



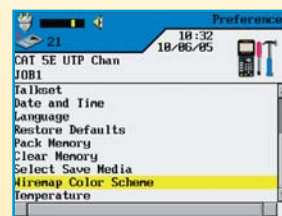
8. Highlight Date and Time, press Enter.



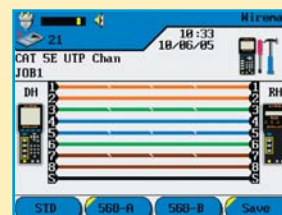
9. Make changes then press Enter.



11. Highlight desired save media, press Enter.



13. Highlight Wiremap Color Scheme, press Enter.



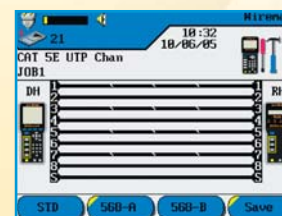
15. Press F2 for 568-A, or F3 for 568-B, press F4 to Save.



10. Highlight Select Save Media, press Enter.



12. Display will revert to previous screen, Slot 1 Storage selected.

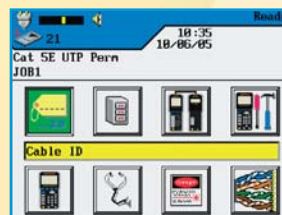


14. STD (Black & White) is default.

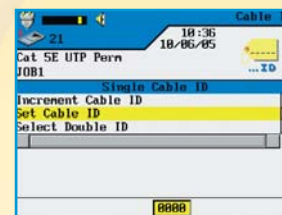


16. Display will revert to previous screen, press Escape.

Section 2: CABLE ID Setup



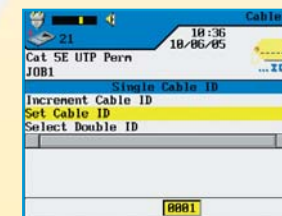
17. Press F1 or highlight the Cable ID icon, press Enter.



18. Highlight Set Cable ID, press Enter.



19. Enter cable name and Current Value, use arrow buttons to go between Cable Name & Current Value, press Enter.

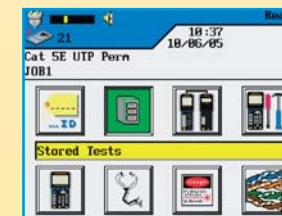


20. The display will revert to the previous screen, Current Value is updated, press Escape.

Section 3: STORED Tests, Job Naming & Selection



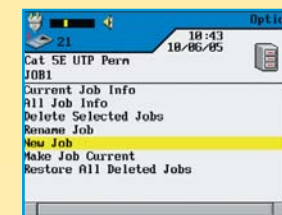
21. The display will return to the Ready screen, press right arrow.



22. Stored Tests icon is highlighted, press Enter.



23. Press F2 for Options.



24. Highlight New Job and press Enter.



25. Enter Job Name as required, press Enter.



26. Job list is updated, Current job updated, press Escape.

